

DOKUMEN NEGARA

SANGAT RAHASIA

A

UJIAN NASIONAL

TAHUN PELAJARAN 2009/2010

BAHASA INGGRIS

(E2)

SMK

P 16

UTAMA



PUSPENDIK
BALITBANG

BSNP
Badan Standar Nasional Pendidikan

KEMENTERIAN PENDIDIKAN NASIONAL

MATA PELAJARAN

Mata Pelajaran : BAHASA INGGRIS
Jenjang : SMK

WAKTU PELAKSANAAN

Hari/Tanggal : Selasa, 23 Maret 2010
Jam : 08.00 - 10.00

PETUNJUK UMUM

1. Isikan identitas Anda ke dalam Lembar Jawaban Ujian Nasional (LJUN) yang tersedia dengan menggunakan pensil 2B sesuai petunjuk di LJUN.
2. Hitamkan bulatan di depan nama mata ujian pada LJUN.
3. Tersedia waktu 120 menit untuk mengerjakan paket tes tersebut.
4. Jumlah soal sebanyak 50 butir, pada setiap butir soal terdapat 3 (tiga) dan 4 (empat) pilihan jawaban.
5. Periksa dan bacalah soal-soal sebelum Anda menjawabnya.
6. Laporkan kepada pengawas ujian apabila terdapat lembar soal yang kurang jelas, rusak, atau tidak lengkap.
7. Mintalah kertas buram kepada pengawas ujian, bila diperlukan.
8. Tidak diizinkan menggunakan kalkulator, HP, tabel matematika atau alat bantu hitung lainnya.
9. Periksalah pekerjaan Anda sebelum diserahkan kepada pengawas ujian.
10. Lembar soal tidak boleh dicoret-coret.

Listening Section

In this section of the test, you will have the chance to show how well you understand spoken English. There are 4 parts to this section, with special directions for each part.

Part I. Pictures

Questions: 1 to 3.

Directions:

For each item, there is a picture in your test book and four short statements about it, on the tape. These statements will be spoken twice, but are NOT WRITTEN out in your test book, so you must listen carefully. You must choose one statement – (A), (B), (C), or (D) – that best describes the picture. Then, on your answer sheet, mark your choice.

Example:

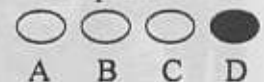
Look at the picture and listen to the four sentences.



Man :

- A. The girl is wearing a T-shirt.
- B. The girl has curly hair.
- C. The girl looks unhappy.
- D. The girl is holding something.

Sample answer



Choice (D) – “The girl is holding something” – best describes what is seen in the picture. Therefore, you should mark (D) on your answer sheet.

Now let's begin with picture number 1.

1.



2.



3.



Part II.**Questions : 4 to 7.****Directions:**

In this part of the test, you will hear several questions spoken in English, followed by three responses, also spoken in English. The question and responses will be spoken twice. They will not be printed in your test book, so you must listen carefully to understand what the speakers are saying. You have to choose the best response to each question.

Now listen to a sample question:

You will hear : Man : Where can I pick up my tickets?

Sample answer

You will also hear : Woman : (A) Thursday morning, if that's convenient.
(B) At the Overseas Travel desk.
(C) I think it's at nine o'clock.

A B C

Choice (B) – "At the Overseas Travel desk" – is the appropriate response to the question "Where can I pick up my tickets?" Therefore, you should mark (B) on your answer sheet.

Now let's begin with question number 4.

4. Mark your answer on your answer sheet.
5. Mark your answer on your answer sheet.
6. Mark your answer on your answer sheet.
7. Mark your answer on your answer sheet.

Part III.**Questions : 8 to 11.****Directions :**

In this part of the test, you will hear several short conversations. You will hear the conversations twice. The conversations will not be printed in your test book, so you must listen carefully to understand what the speakers are saying.

In your test book, you will read a question about each conversation. The question will be followed by four answers. You have to choose the best answer to each question, and mark it on your answer sheet.

Example:

You will hear: Man : Are you a student, here?
 Woman : Yes, Sir.
 Man : Where is the English class?
 Woman : Next to the laboratory.

You will read: Where does the dialogue probably take place?
 A. At the hospital.
 B. At the station.
 C. At the market.
 D. In a school.

Sample answer
 A B C D

Choice (D) – "In a school" – is the best answer to the question, "Where does the dialogue probably take place?" Therefore, you should mark (D) on your answer sheet.

8. What does the woman say about her mother?
 A. She can cook well.
 B. She owns a restaurant.
 C. She's always in a hurry.
 D. She never has breakfast.
9. What does the woman think about used bookstores?
 A. They are available only in the afternoon.
 B. They are hard to find anywhere.
 C. They provide first editions.
 D. They are less expensive.
10. Why didn't the man get an answer?
 A. The phone is out of order.
 B. Nobody was in the office.
 C. The line was very busy.
 D. It's a wrong number.
11. How many books are allowed to be borrowed at one time?
 A. More than five books.
 B. Two books only.
 C. Thirty books.
 D. Five books.

Part IV.**Questions : 12 to 15.****Directions:**

In this part of the test, you will hear several short talks. Each will be spoken twice. They will not be printed in your test book, so you must listen carefully to understand and remember what is being said.

In your test book, you will read two or more questions about each short talk. Each question will be followed by four answers. You have to choose the best answer to each question, and mark it on your answer sheet.

12. Who will most likely be listening to this announcement?

- A. The lecturers.
- B. The sociologists.
- C. The students.
- D. The announcers.

13. When should the students submit the paper?

- A. Today.
- B. By Friday.
- C. This week.
- D. In two weeks.

14. What is being advertised?

- A. A multi-vitamin drinking bottle.
- B. A new brand of bottled water.
- C. The best-selling multi-vitamin tablets.
- D. Vitamins needed for human nutrition.

15. What is the main advantage offered in the advertisement?

- A. Having the vitamins needed for one day.
- B. Purchasing for much more money.
- C. Getting more than a liter of water.
- D. Packing some good bottles.

– This is the end of the listening section –

Questions 16 to 30, choose the most appropriate answer.

16. Ayu : Tell me, what do you do in your spare time, Yudi?
Yudi : ... I always try a new recipe from the newest Cooking Book.
A. I care about Japanese tofu.
B. I love eating many kinds of food.
C. I enjoy collecting traditional utensils.
D. I like preparing the table.
17. Receptionist : I'm sorry. Ms. Bertha isn't in the office today.
Caller : ...
A. Then I'll call her back another time.
B. OK. Would you like to leave a message?
C. What can I do for you?
D. I think I've dialed the wrong number.
18. Mira : Did you go to the concert last night?
Yani : Yes, ... and I saw Jane play the harp.
A. I admire her
B. I 'm going there
C. It was great
D. It sounds bad
19. Fanny : There will be a student president election on Saturday? Would you like to participate?
Tomo : ... Can we go there together, then?
Fanny : Sure, I'll pick you at ten.
A. I'm already busy
B. I'm not sure yet
C. No, thanks
D. Of course.
20. Doni : The meal was delicious. ...
Dian : Thank you. Have some more dessert?
Doni : No, thanks. I already had two pieces of cake.
A. How kind you are!
B. What a lovely place!
C. I couldn't enjoy it.
D. You're a great cook.
21. Visitor : Why is this place so dirty?
Host : I'm sorry. But we'll clean it as soon as possible.
A. It's not problem, right?
B. Can you help us clean it?
C. The cleaning service is absent.
D. The receptionist will inform you later.

22. Susan : I can't find my boots and umbrella.... I really don't want to go out without them.
Dyah : Come on! You've got a rain coat. That'll keep you dry.
A. I think I'm going to take my raincoat.
B. Can you help me look for them?
C. I guess I can put them on now.
D. Do you remember when it happened?
23. Donita : I feel exhausted today, but the report is due at three.
Fikri : ...
Donita : Thanks. That's very kind of you.
A. You can take a rest later.
B. I had better give you a hand, then.
C. You ought to finish the report now.
D. I have to concentrate on my job, first.
24. Hanif : I would like to re-schedule my appointment with the doctor for next Monday ...
Receptionist : I'm sorry, but Monday is completely booked.
A. if it is still open.
B. if it were possible.
C. unless the doctor will accept it.
D. unless I can go there.
25. Danny : It is a good idea that the government prohibit smoking in public places.
Pandu : ... It's awful sitting next to someone smoking.
A. I disagree.
B. I can't say so.
C. That's true.
D. Probably not.
26. Ani : Excuse me, where can I find a bus stop to down town?
Adi : ... It's in front of the laundromat.
Ani : Thank you.
A. I don't know.
B. Take a number 15 bus.
C. The bus is over there.
D. Just across this street.
27. Man : How often does the train from Yogya arrive?
Woman : ... You can ask the information for the schedule.
Man : Thank you.
A. It arrived 5 hours ago.
B. It usually leaves at three.
C. It departs on time.
D. It comes every 12 hours.

28. Ticket service : ...
 Ms. Eva : I want an economy class. Would you give me A seat by the isle?
 Ticket service : Sure, ma'am, here is your ticket.
 A. Would you take the business class?
 B. What kind of ticket do you need, Ma'am?
 C. Where would you like to stay?
 D. When would you like to go?
29. Son : When are we going to eat?
 Mom : ... I'm still preparing it.
 A. We have to find the menu first.
 B. We should call the waiter.
 C. We'll probably have it around six.
 D. We've already reserved a table.
30. Puspita : The lightning knocked my TV out. ...
 Ronald : Yes. Let me see what's wrong.
 A. Do you think you can fix it?
 B. Do you know what happened?
 C. Why don't you buy me a new one?
 D. What about taking it to the repair shop?

Questions 31 to 35, choose the inappropriate structure in the sentences below.

31. A survey indicates that 'reality shows' have attracted the higher proportion of TV viewers since the end of the last quarter of 2008.
 A B
 C D
32. The giant panda whose is also known as the panda bear or the bamboo panda is almost extinct because the bamboo forests where it lives are destroyed.
 A B
 C D
33. Customer : How much this diamond ring cost?
 Clerk : Oh, that's Rp1.750.000,00.
 Customer : That is quite expensive. May you give it for Rp1.250.000,00?
 Customer : That's too low. I'll let you have it for Rp1.500.000,00.
 A B
 C D
34. We are a leasing company. As many as 65% of our employees are posted in the marketing division. Most of them are smart, talented, good look young men, who do not mind working ten hours a day, six days a week.
 A B C
 D

